

LORLIX-PLUS TABLETS

Lornoxicam 8 mg + Paracetamol I.P. 325 mg

"Dual Relief: Strong Anti-Inflammatory & Rapid Analgesic Action"

Marketed by: Human Orthocare
A Subsidiary of Human Biolife India Pvt. Ltd.

www.humanorthocare.com



Product Overview

Composition (per tablet):

Lornoxicam

8 mg

Potent NSAID with balanced COX-1/COX-2 inhibition

Paracetamol I.P.

325 mg

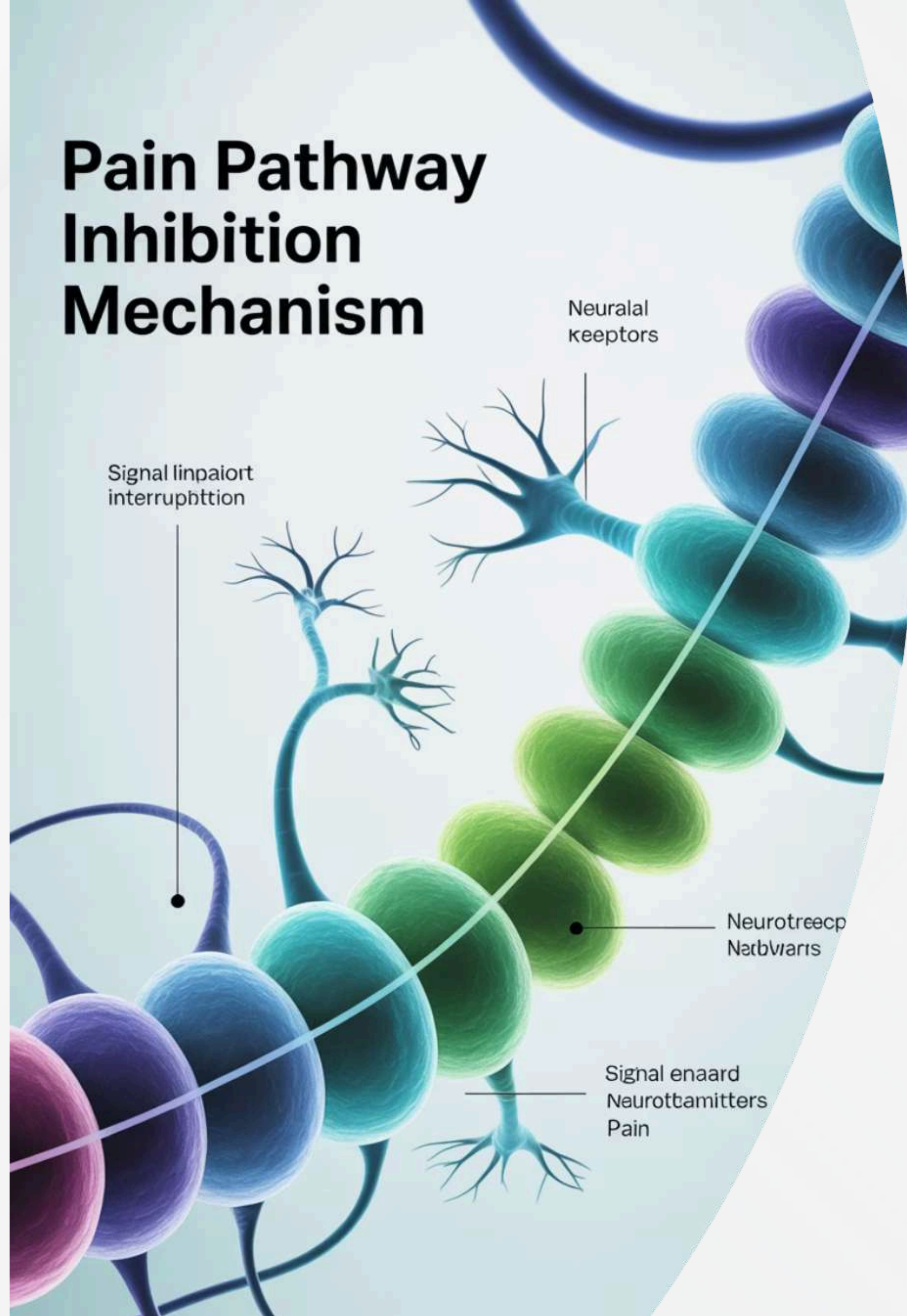
Central analgesic & antipyretic action

Key Features:

- Synergistic dual-action providing stronger pain control than monotherapy
- Effective in both acute and chronic musculoskeletal conditions
- Rapid onset with sustained relief
- Enhanced patient compliance with single-tablet therapy



Pain Pathway Inhibition Mechanism



Mechanism of Action

Lornoxicam Action

- Inhibits COX enzymes
- Reduces prostaglandin synthesis
- Decreases pain & inflammation
- High analgesic potency with short half-life

Paracetamol Action

- Central COX inhibition
- Quick pain relief
- Effective fever reduction
- Complements peripheral action

Combined Result

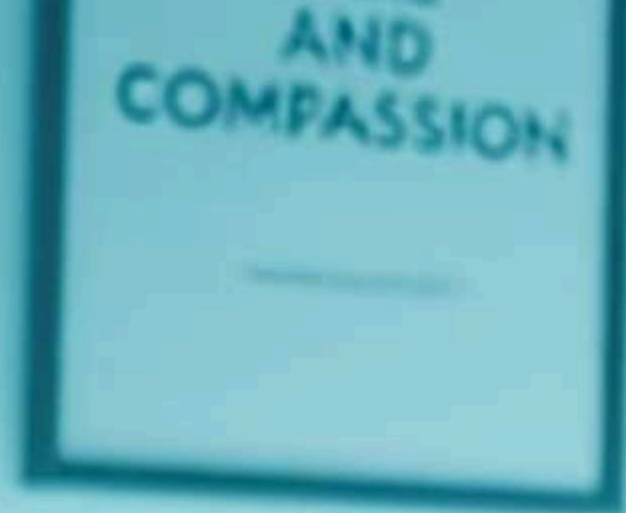
Potent anti-inflammatory effect combined with rapid analgesic action

Dual pathway targeting for comprehensive pain management



**Human
Ortho Care**

A SUBSIDIARY OF HUMAN BIOLIFE INDIA PVT. LTD.



Clinical Indications

Lorlix-Plus Tablets are recommended for comprehensive pain management across various conditions:



Arthritis Management

- Osteoarthritis
- Rheumatoid arthritis
- Ankylosing spondylitis



Trauma & Surgery

- Post-traumatic pain
- Post-operative pain
- Acute sprains and strains



Spinal Conditions

- Low back pain
- Cervical spondylosis
- Acute musculoskeletal pain



Other Pain Conditions

- Dental pain
- Migraine
- General inflammatory pain

Clinical Advantages



Superior Pain Relief

Dual-action provides stronger efficacy compared to NSAID monotherapy



Rapid Action

Fast analgesic control with potent anti-inflammatory effects



Improved Function

Reduces stiffness and significantly improves patient mobility



Better Tolerability

Short half-life reduces accumulation and enhances safety profile



Patient Compliance

Convenient single-tablet therapy improves adherence to treatment



**Human
Ortho Care**
A SUBSIDIARY OF HUMAN BIOTECH INDIA PVT. LTD.

Comparison with Other NSAID + Paracetamol Combinations

Parameter	Lorlix-Plus (Lornoxicam + PCM)	Diclofenac + PCM	Aceclofenac + PCM
Analgesic Strength	✓ Very Strong	✓ Strong	✓ Strong
Anti-inflammatory	✓ Strong	✓ Strong	✓ Strong
Onset of Action	✓ Rapid	⚠ Moderate	⚠ Moderate
GI Safety	✓ Better	✗ Poor	⚠ Moderate
Patient Compliance	✓ High	⚠ Moderate	⚠ Moderate

🕒 **Clinical Advantage:** Lorlix-Plus demonstrates superior performance across multiple parameters, making it the preferred choice for comprehensive pain management.

Dosage & Administration

Standard Dosage

1 1 Tablet 1-2 times daily after meals

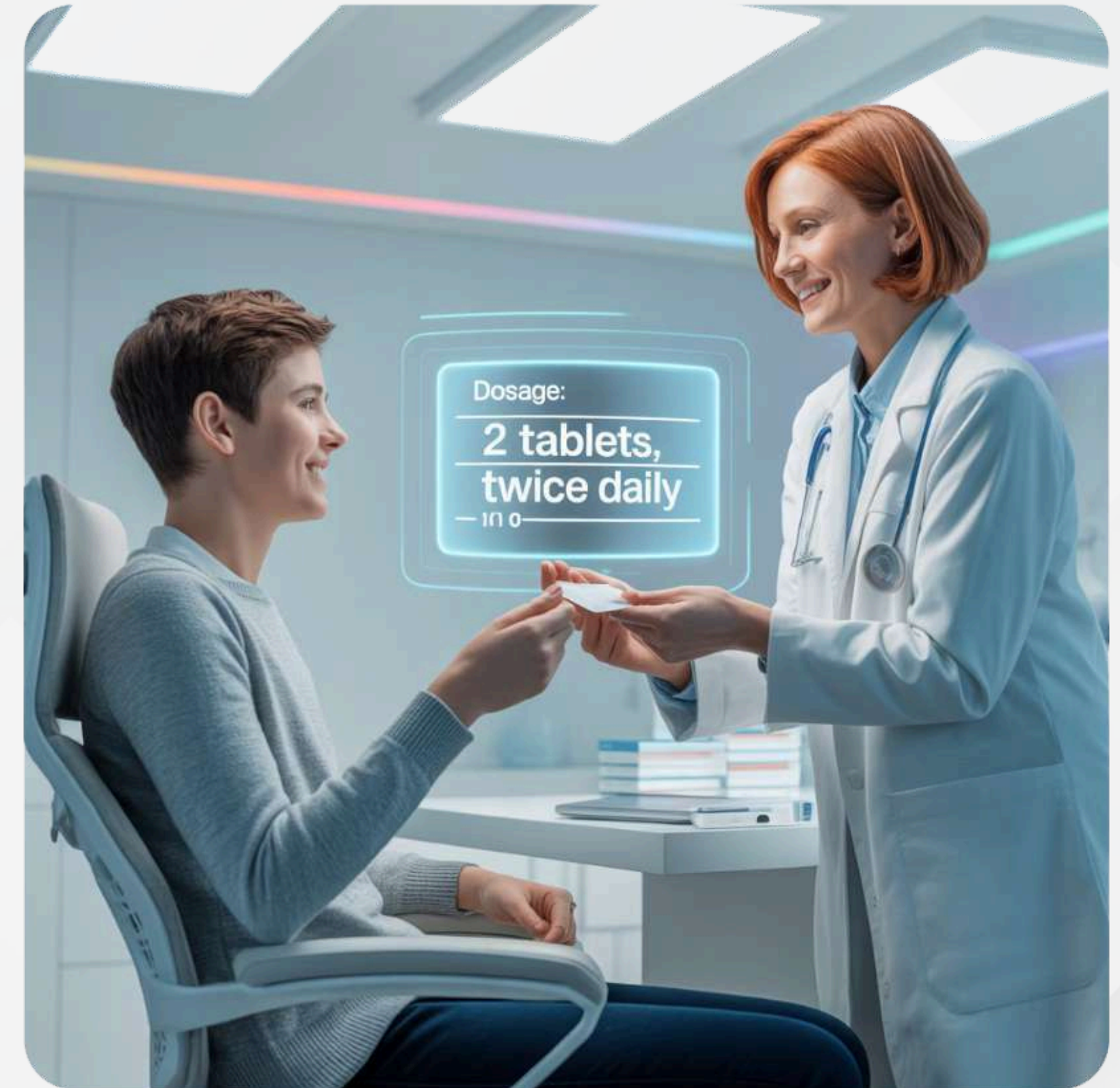
Or as prescribed by physician

Important Guidelines

2 Use lowest effective dose for shortest duration

Adjust dose in hepatic/renal impairment

⚠ Clinical Note: Always individualise dosing based on patient condition, severity of symptoms, and response to treatment. Monitor patients regularly for therapeutic response and adverse effects.



"Optimal dosing ensures maximum therapeutic benefit whilst minimising potential adverse effects."



Safety & Tolerability Profile

1

Common Side Effects

- Mild gastric upset
- Nausea
- Generally well-tolerated

2

Rare Side Effects

- Dizziness
- Skin rash
- Headache

3

Very Rare

- Hepatotoxicity (paracetamol overdose)
- Serious allergic reactions

Contraindications:

Gastrointestinal

Active peptic ulcer or GI bleeding

Organ Impairment

Severe hepatic or renal impairment

Special Populations

Pregnancy and lactation

Hypersensitivity

Known allergy to NSAIDs or paracetamol



Why Prescribe Lorlix-Plus?



Dual-Action Efficacy

Stronger efficacy in managing both pain and inflammation compared to single-agent therapy



Rapid Onset

Quick relief with high analgesic potency for immediate patient comfort



Better GI Tolerability

Improved gastrointestinal safety profile compared to diclofenac combinations



Versatile Application

Suitable for both acute and chronic pain management settings



Trusted Formulation

Backed by Human Orthocare's commitment to pharmaceutical excellence

"The doctor's choice for comprehensive pain management with proven efficacy and safety."



**Human
Ortho Care**

A SUBSIDIARY OF HUMAN BIOLIFE INDIA PVT. LTD.

Contact Us

Step into care that moves you forward.

Use with clinical discretion, especially in high-risk orthopedic conditions.

HumAn Orthocare – A Subsidiary of Human Biolife India Pvt. Ltd.

For medical queries or collaboration:



www.humanorthocare.com